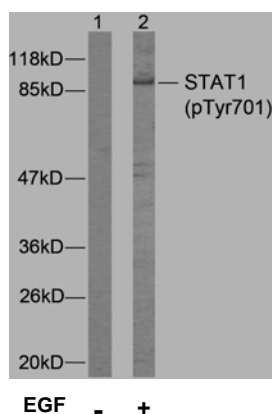


## Rabbit anti STAT-1 (pTyr701)

- Catalog Number:** pAP11044  
**Amount:** 100µl (for 10 Western Blotting)  
**Form of Antibody:** Rabbit IgG in phosphate buffered saline (without  $Mg^{2+}$  and  $Ca^{2+}$ ), pH 7.4, 150mM NaCl, 0.02% sodium azide and 50% glycerol.  
**Storage/Stability:** Store at -20°C/1 year  
**Immunogen:** The antiserum was produced against synthesized phosphopeptide derived from human STAT1 around the phosphorylation site of tyrosine 701 (T-G-Y<sup>P</sup>-I-K).  
**Purification:** The antibody was affinity-purified from rabbit antiserum by affinity-chromatography using epitope-specific phosphopeptide. The antibody against non-phosphopeptide was removed by chromatography using non-phosphopeptide corresponding to the phosphorylation site.  
**Specificity/Sensitivity:** STAT1 (phospho-Tyr701) antibody detects endogenous levels of STAT1 only when phosphorylated at tyrosine 701.  
**Reactivity:** Human, Mouse, Rat  
**Applications:** WB: 1:1000  
**Swiss-Prot No. :** P42224  
**References:** Heim M H, (1999) J Recept Signal Transduct Res. 19: 75-120.  
Durbin J E, et al. (1996) Cell. 84: 443-450.  
Demoulin J, B. et al. (1999) J Biol Chem. 274: 25855-258.  
Ihle J N, et al. (1994) Trends Biochem Sci. 19: 222-227.



Western blot analysis of extracts from MCF7 cells using STAT1 (phospho-Tyr701) antibody (pAP11044).

**For Research Use Only**

Contact & Ordering Information: Angio-Proteomie, 11 Park Drive, Suite 12, Boston, MA 02215, USA. Fax: (480) 247-4337, [angioproteomie@gmail.com](mailto:angioproteomie@gmail.com)